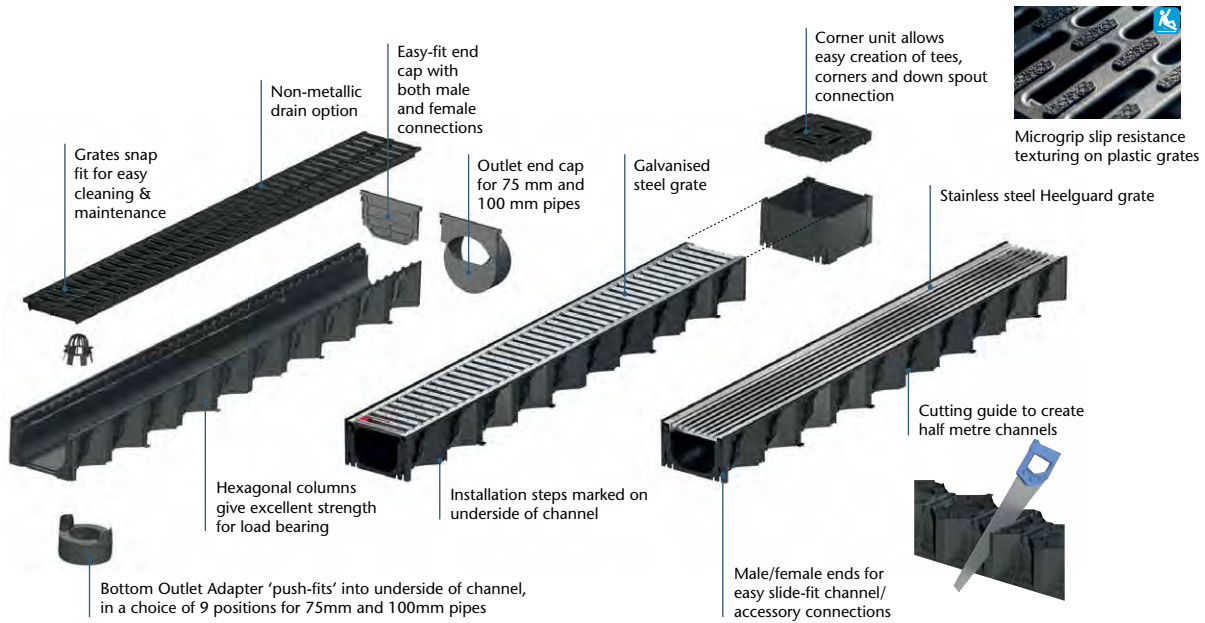


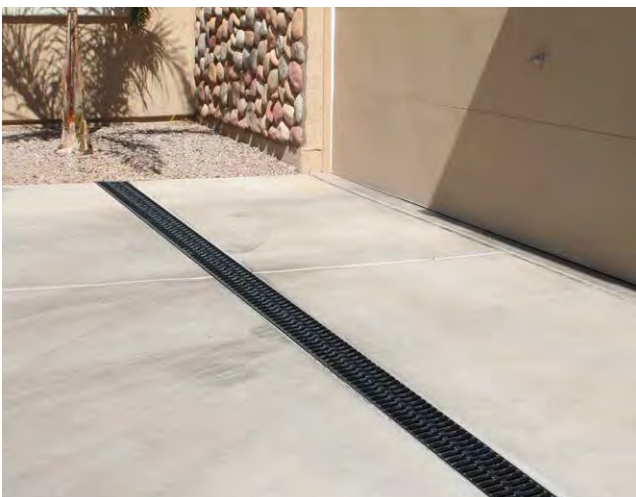
ACO HexaLine 100 - Product Overview



ACO HexaLine 100

	Reece Part No.	ACO Part No.	Width [mm]	Height [mm]	Weight [kg]
Channel					
ACO HexaLine 100 mm x 1m channel only	908962	319200	130	81	0.8
Grates					
ACO HexaLine galvanised grate only - (1 m)	908963	38516	117	-	1.2
ACO HexaLine stainless steel Heelguard grate only - (1m)	908964	10323	117	-	3.2
ACO HexaLine plastic grate only - (1m)	908965	319250	117	-	0.6
ACO HexaLine brickslot grate only - (0.5 m*)	908966	319554	117	-	0.4
Accessories					
ACO HexaLine plastic end cap	908967	319288	130	81	0.1
ACO HexaLine plastic 100 mm end outlet	908968	319289	130	81	0.1
ACO HexaLine grate removal tool	908969	03429	-	-	0.1
ACO HexaLine plastic corner unit	908970	19280	130	81	0.4
ACO HexaLine bottom outlet adapter	908978	19293	-	-	0.1

* 2 grates needed to fit a 1 metre channel



Installation instructions

1. Excavate area to accommodate trench drain and 100 mm concrete surround.
2. Rough in 75 mm or 100 mm outlet pipe, compact excavation base and lay 100 mm deep concrete bed.
3. Knockout channel base for outlet.
4. Lay channels working away from outlet, channels slide-fit together.
5. Pour 100 mm concrete around channel sides allowing for pavement detail.
6. Finish pavement, pavers must be 3 mm higher than the grate.
For pedestrian only applications, trench drain can be set directly on well compacted soil. For driveway applications, trench drain MUST be surrounded 100 mm of concrete.

**For full installation guidelines visit,
www.acoself.com.au/product-support/installation**